

Channel Islands National Park



July 13, 2023

Reuven Bank

Lead Interpretive Ranger

Read below and vote if statement
True or False for you:

“I have visited Channel Islands National Park.”









Significance

The isolated and undeveloped nature of the Channel Islands makes them an exceptional laboratory...



Isolation, Endemic Species



Marine Ecosystems



Cultural Connections

Island Place Names



tuqan



wimaḥ



limuw



'anyapax

Archeological Districts



With more than 13,000 years of human occupation, the Channel Islands have a high density of precontact sites, as well as sites, structures, and features related to the historic period. There are approximately 3,000 archeological sites recorded within the five islands that make up the park.







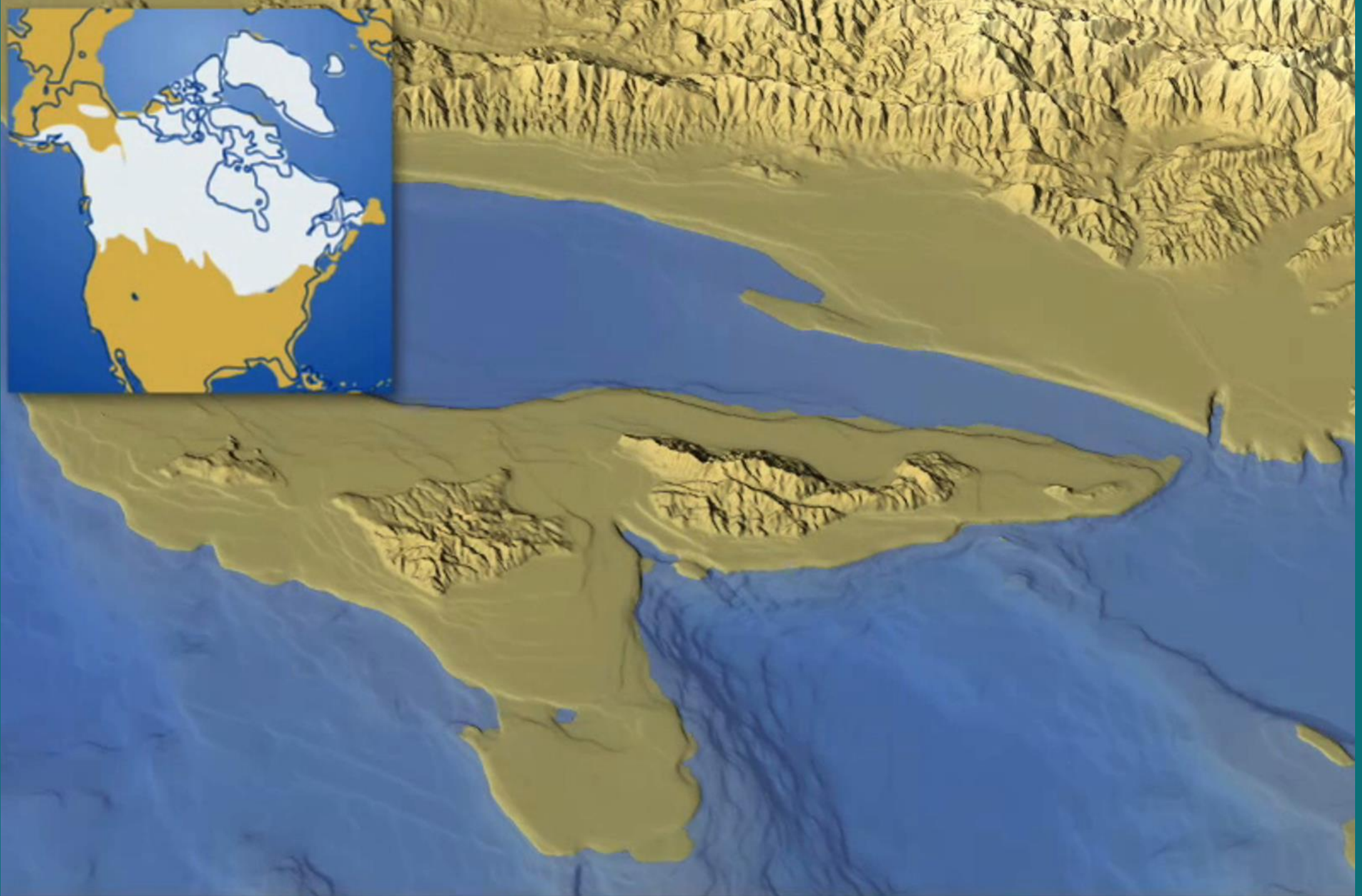
Channel Islands National Park

siwo't / 'tchunashnga

Santa Barbara Island

National Park Service
U.S. Department of the Interior





Point Bennett, San Miguel Island



Tim Hauf

Endemic Species

The islands are home to nearly 150 endemic species.



Island Scrub Jay



Island Red Buckwheat



Island Fox

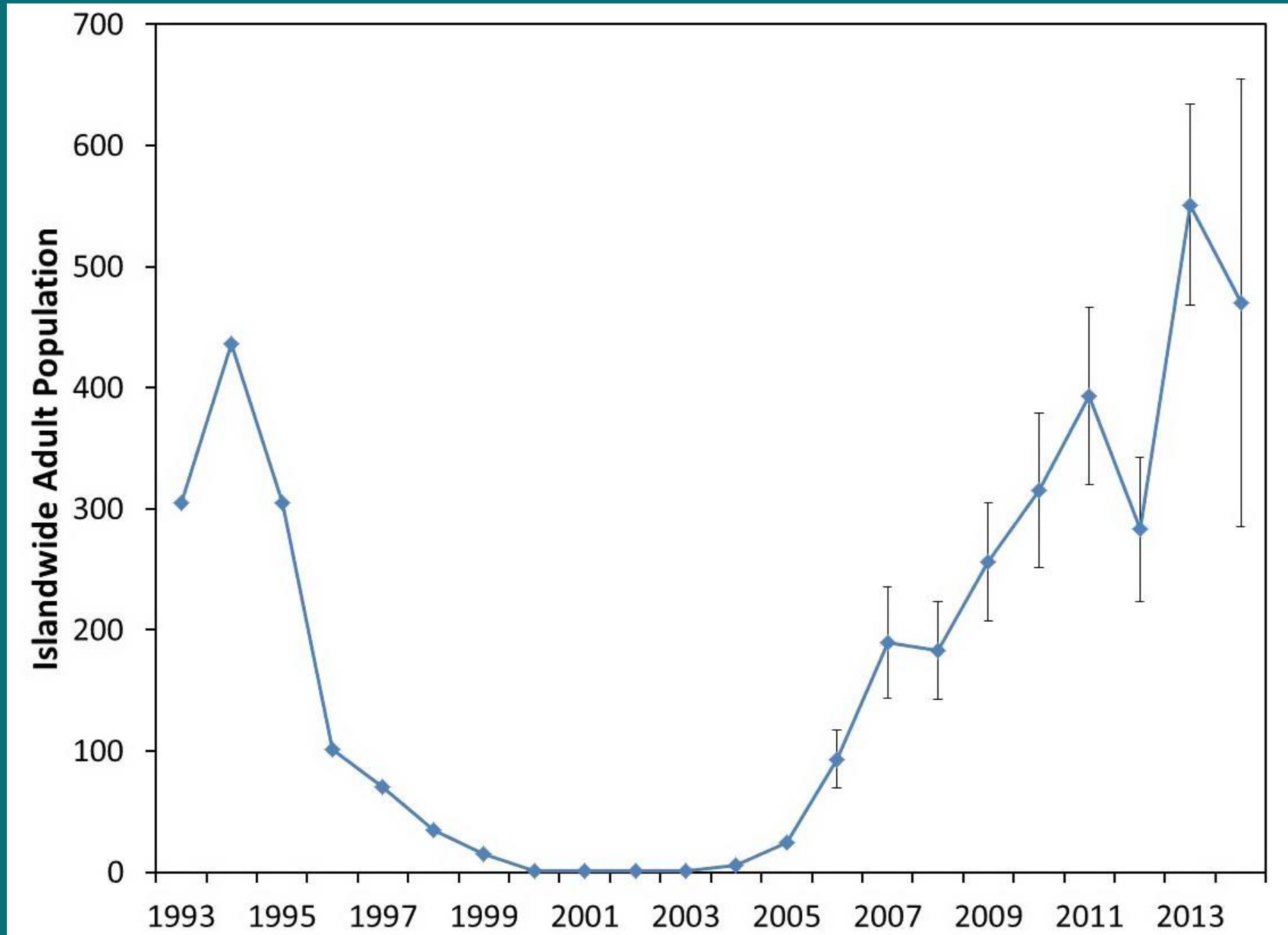
Island Fox (*Urocyon littoralis*)



One of the smallest canids in the world.
Occurring only on six of California's eight Channel Islands.








Source NPS: Decline and Recovery of Island Foxes on San Miguel Island





Half the park is
under water!









Kelp Forests

Scott Gabara /NPS



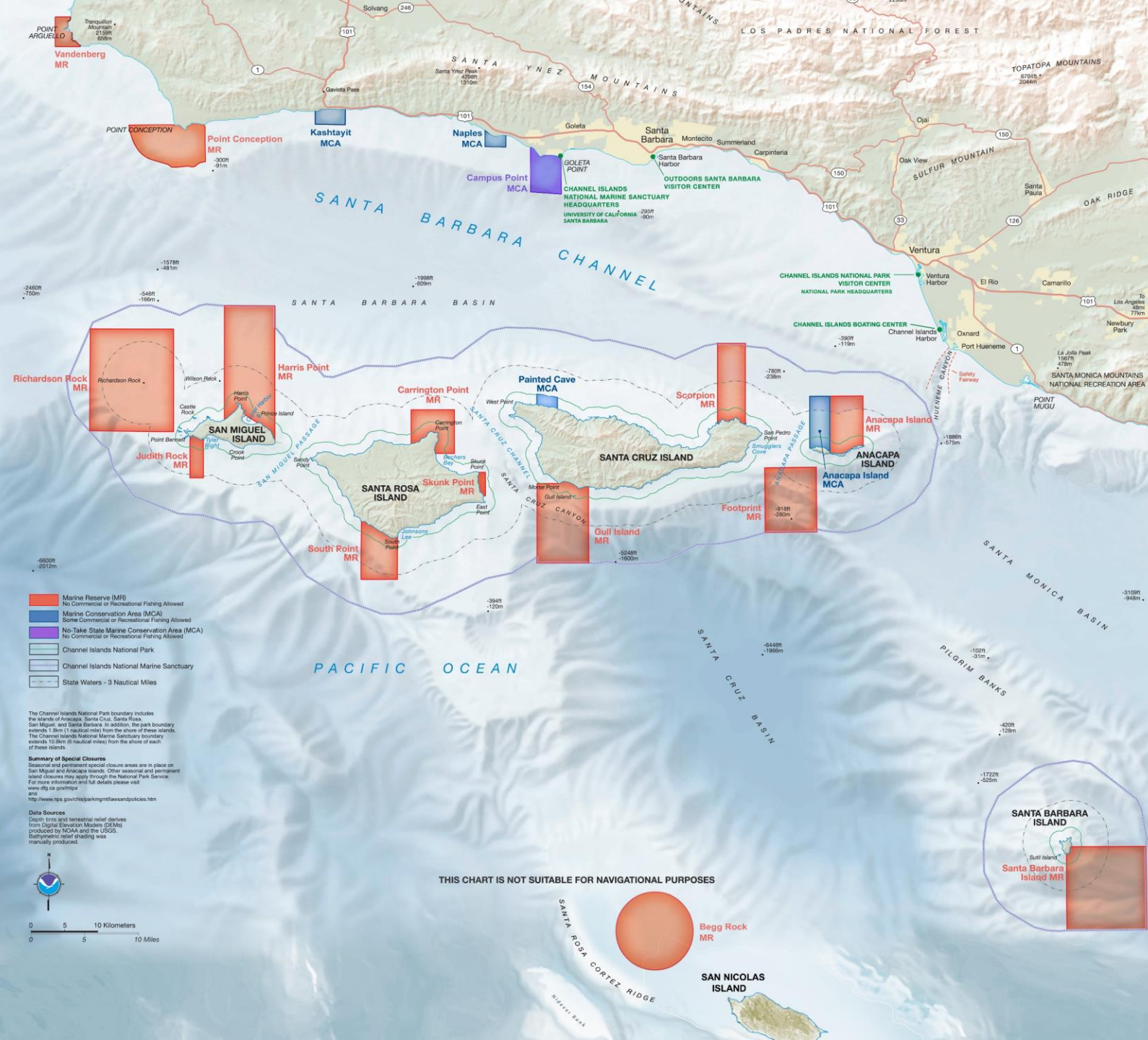
Kelp Forests

Scott Gabara/NPS

Kelp Forest Monitoring



Marine Protected Areas





Channel Islands Live



Questions?



Channel Islands National Park



Thank you!

Reuven Bank, Channel Islands National Park
Lead Interpretive Ranger

Want to Get Involved?
Channel Islands Park Foundation (ciparkfoundation.org)
Channel Islands Naturalist Corps